



**ALASKA DIVISION OF HOMELAND SECURITY &
EMERGENCY MANAGEMENT**



SITUATION REPORT 22-361 • DECEMBER 27, 2022

Toll-Free 1.800.478.2337

Anchorage Area 907.428.7000

SEOC 907.428.7100

<p><u>SEOC Preparedness Level</u> Level 1 – Routine Operations</p>	<p>http://ready.alaska.gov</p>	<p><u>National Terrorism Advisory System:</u> Read the NTAS Bulletin here</p>
<p><u>Maritime Security (MARSEC)</u> Level:1-Minimum Appropriate Security Measures</p>	<p>WHO Novel Coronavirus Pandemic (COVID-19): 2019 Novel Coronavirus</p>	<p><u>Alaska Military Installation Force Protection Level:</u> FPCON Bravo</p>

(Significant changes from previous situation reports are in red.)

Significant Issues:

Mat-Su Windstorm

Over the weekend Mat-Su Borough Emergency Management contacted the SEOC reporting that the City of Palmer was declaring a local disaster and requesting state assistance for the blizzard and windblown snow impacts to the City’s roads. At the time of the call, 27 of the City’s 40 roads were impassable and the City was seeking emergency assistance with road clearance. SEOC contacted State DOT/PF to see if they maybe able to provide assistance. SEOC will work with DOT/PF and City of Palmer and the Mat-Su borough to determine damages and costs from this incident.

State of Alaska Department of Health (DOH)

The DOH is leading the State of Alaska COVID-19 Recovery, supported by the SEOC and other state departments as required.

For current COVID-19 information, see:

<https://covid19.alaska.gov/>

<https://www.cdc.gov/coronavirus/2019-ncov/index.html>

NTAS Bulletin

The U.S. Department of Homeland Security has issued an updated National Terrorism Advisory Bulletin. The updated bulletin can be viewed at the below link

To read current or expired advisories, click the link below:

<https://www.dhs.gov/national-terrorism-advisory-system>

Travel Alerts and Conditions

For current driving conditions dial 511 or link to <https://511.alaska.gov/>

Barry Arm Landslide / Tsunami Risk

For the latest information on the Barry Arm Landslide and Tsunami risk, click here: [DGGG Barry Arm Landslide and Tsunami Hazard](#)

Recent Earthquakes

USGS Earthquake Information: <http://earthquake.usgs.gov/>

National Tsunami Warning Center: <http://tsunami.gov/>

Alaska Volcanoes

Cleveland Alert Level: **Advisory** and Aviation Color Code: **Yellow**

Great Sitkin Alert Level: **Watch** and Aviation Color Code: **Orange**

Pavlof Alert Level: **Advisory** and Aviation Color Code: **Yellow**

Semisopchnoi Alert Level: **Advisory** and Aviation Color Code: **Yellow**

Takawangah Alert Level: **Advisory** and Aviation Color Code: **Yellow**

For Alaska Volcano updates, go to: <https://www.avo.alaska.edu/>

Air Quality Index (AQI) Advisories

For the most up to date Air Quality Index Advisories:

<http://dec.alaska.gov/Applications/Air/airtoolsweb/Home/Index>

Spills of Oil and Hazardous Substances

The ADEC Spill Prevention and Response page is located at:

<http://dec.alaska.gov/spar/ppr/spill-information/response/>

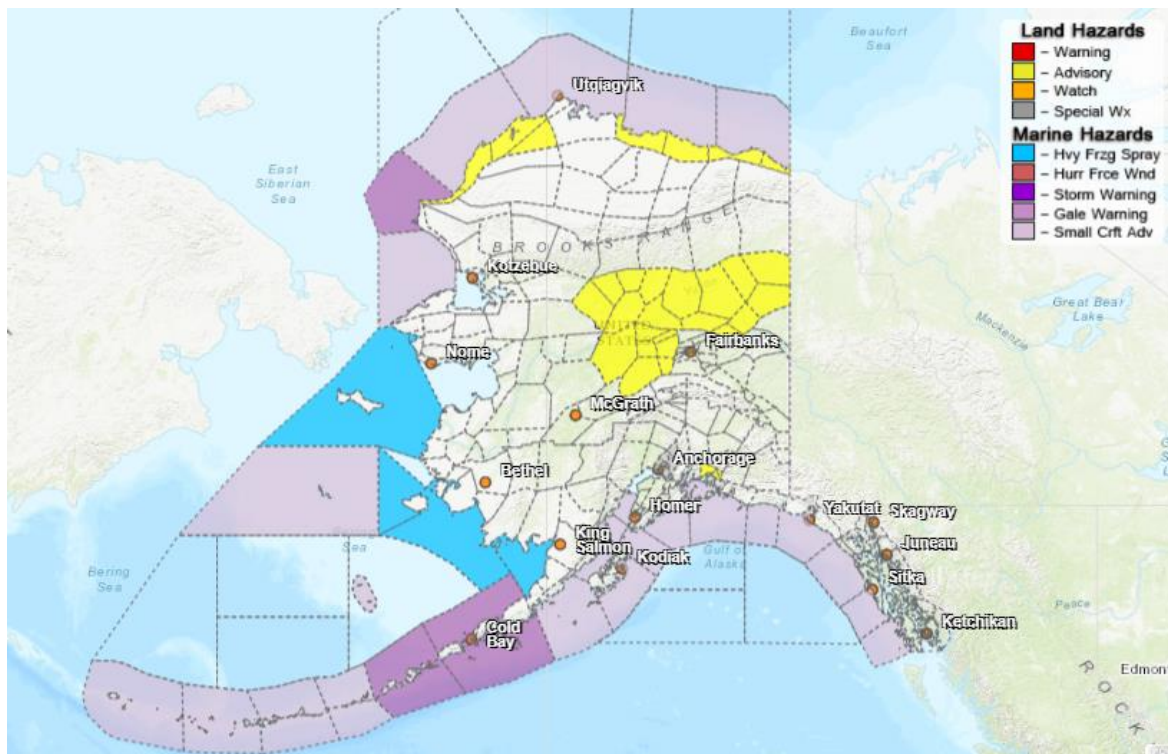
Alaska Cyber Security Information

State Employees may sign up for cyber security notifications and alerts at

<https://oit.alaska.gov/security>

CISA-Cybersecurity Services and Tools: www.cisa.gov/free-cybersecurity-services-and-tools

Significant Weather:



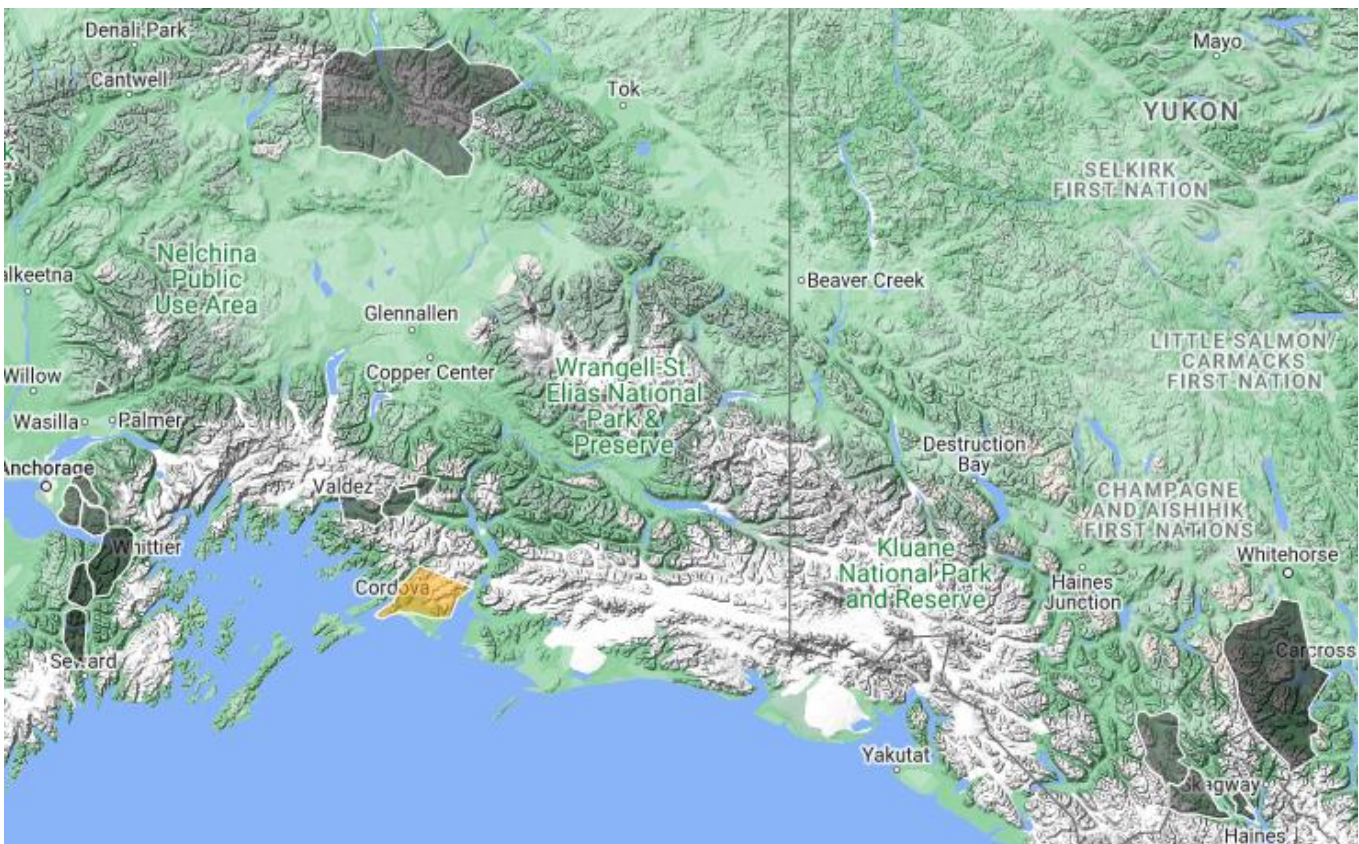
Special weather statement for Anchorage and Matanuska Valley through this morning for the potential of freezing rain.

Winter weather advisories are in effect for the following areas:

- Northeast Prince William Sound until 10am Tuesday morning for snow accumulation up to 1 inch and winds gusting to 35mph.
- Upper Koyukuk Valley, Yukon Flats, Central Interior until 3pm Tuesday for blowing snow and wind chills as low as 35 degrees below zero.
- Western Arctic Coast, Eastern Beaufort Sea Coast and the Central Beaufort Sea Coast until 6pm Tuesday for blowing snow and wind chills of 55 degrees below zero.

For more information and the most current weather, Watches / Warnings / Advisories go to: <http://www.weather.gov/arh>.

Avalanche Forecast:



- Areas near Haines have a moderate advisory level above 1,500 ft and a considerable advisory level above 2,500ft.
- Areas near Cordova have a considerable advisory level above 1,000 ft and a moderate advisory level below 1,00ft.
- Areas near Valdez have a moderate advisory level at all elevations.
- Turnagain Pass has high advisory conditions at this time.

Check the Avalanche Forecast Center closest to your area for the most up to date information on avalanche potential. <https://alaskasnow.org> or <https://www.weather.gov/afc/avalancheweather>

The Next Situation Report: will be **28** December 2022. A significant change in the situation or the threat level will prompt an interim report. This report is posted on the internet at <https://ready.alaska.gov/sitrep>.

To register for email distribution, go to <http://list.state.ak.us/mailman/listinfo/dhsem.situation.report>. Direct questions regarding this report to the SEOC at 907-428-7100 or seoc@alaska.gov